



Model EM1 Environmental Monitor



Device Manual

Sensatronics
20A Dunklee Road
Bow, NH 03304
(800) 633-1033

www.sensatronics.com

Copyright 2005, Sensatronics, LLC
All rights reserved.

The information contained in this manual is subject to change without notice. Sensatronics reserves the right to make changes to equipment design or program components, as progress in engineering, manufacturing methods, or other circumstances may warrant. No responsibility is assumed for the use of software or equipment that is not supplied by Sensatronics.

Microsoft and Windows are registered trademarks of Microsoft Corporation.

Ethernet is a trademark of Xerox Corporation.

All other third-party trademarks and registered trademarks are the property of their respective owners.

How to contact Sensatronics, LLC

Address: 20A Dunklee Road, Bow, NH 03304

Phone: (800) 633-1033, (603) 224-0167

FAX: (603) 224-2401

Email (sales): sales@sensatronics.com

Email (support): support@sensatronics.com

Web site: www.sensatronics.com

Printed in U.S.A.
V2.0

Regulatory Information

U.S.A. Requirements

FCC Radio Frequency Class A Notice for Environmental Monitor

This equipment has been tested and found to comply with the limits for a Class A digital device, pursuant to Part 15 of the Federal Communications Commission (FCC) rules. These limits are designed to provide reasonable protection against harmful interference when the equipment is operated in a commercial environment. This equipment generates, uses, and can radiate radio frequency energy. If it is not installed and used in accordance with the instruction manual, it may cause harmful interference to radio communications. Operation of this equipment in a residential area is likely to cause harmful interference, in which case users will be required to take whatever measures may be necessary to correct the interference at their own expense. Do not attempt to repair or modify this equipment. All repairs must be performed by Sensatronics, or an authorized Sensatronics representative.

UL Listing - U.S. and Canada

This equipment uses a power supply that has been listed by Underwriter Laboratories, Inc. for use in the U.S. and meets requirements of the Canadian Standards Association CAN/CSA.

Table of Contents

TECHNICAL SUPPORT	1
<hr/>	
PRODUCT OVERVIEW	2
MONITOR	2
PROBES	2
SOFTWARE	3
<hr/>	
TECHNICAL SPECIFICATIONS	3
STANDARD FEATURES	3
DETAIL DIAGRAM	4
<hr/>	
CONNECTING THE DEVICE	4
STEP 1. CONNECT THE CONFIGURATION CABLE	5
STEP 2. CONNECT THE TEMPERATURE PROBES	6
STEP 3. CONNECT THE POWER SUPPLY	7
STEP 4. CONNECT THE ETHERNET CABLE	7
<hr/>	
CONFIGURING THE DEVICE	8
STEP 1. CONFIGURE THE RS-232 PORTS	8
STEP 2. CONFIGURE THE IP ADDRESS AND NETWORK MASK	9
STEP 3. NAME THE DEVICE AND THE PROBES	10
STEP 4. SET SNMP PARAMETERS	10
STEP 5. COMPLETE THE PROCESS	11
STEP 6. VERIFY PROPER WORKING ORDER	11
<hr/>	
SOFTWARE OPTIONS	13
SEMS SOLUTION	13
SNMP	13
CRON LOG FILE TOOL	14
WRITE YOUR OWN	15
SOFTWARE PLUG-INS	17
<hr/>	
TROUBLE SHOOTING	18
<hr/>	
WARRANTY	21
<hr/>	
INDEX	24
<hr/>	


Technical Support


Sensatronics never charges for customer support. Everything you need to get started and to keep your Sensatronics solution operating smoothly is included with the cost of your purchase.


Our highly skilled staff can answer your support questions and provide online training at your request – and you can share ideas with other Sensatronics customers through our online bulletin board.

You can reach our support team in any of the following ways:

 Email us at support@sensatronics.com

 Instant message us with AOL Instant Messenger
Screen name: SensatronicsGuy

 Access our Support Forum www.sensatronics.com/bboard/

 Call us at 1 (800) 633-1033

Product Overview

Monitor

The Model EM1 Environmental Monitor is designed to monitor temperature, relative humidity and leak detection. Equipped to accommodate four ports per condition, it can be installed and running in minutes.

Designed with flanges for wall or rack mounting, the lightweight device measures a compact 4¼" x 3¼" x 1⅜" (10.8cm x 8.3cm x 3.49cm) and weighs about 0.35 pounds.



Probes are available separately to allow you to purchase just what you need according to the number of units and/or conditions that you are monitoring. The Model EM1 device is designed to be used with our standard temperature probes, combination temperature/relative humidity probes, and our specialty wetness probes. All come in varying lengths with custom lengths also available.

Probes

The temperature/humidity probe measures temperatures from -40°F to 203°F (-40°C to 95°C) and relative humidity from 5% to 95%, non-condensing. The probe is supplied with a 10' cable; longer cables are also available.

In addition to the temperature humidity probe, you can use the standard or heavy-duty temperature probes used with the Model E.

The standard probe has a 50-foot, 24-gauge AWG cable with the sensor housed in a small, white nylon cap. It is appropriate for most indoor applications. The heavy-duty probe has a 75-foot, PVC-jacketed and shielded cable with the sensor housed in a stainless steel cylinder. It is designed to withstand the harsher outdoor environments.



Note: The standard and temperature/humidity probes can be used to 60°C. The heavy-duty temperature probe can be used to 95°C.

The wetness probe is a rope that detects the presence of conductive liquids in a location where wetness is undesirable. The probe is scaled from 1 to approximately 100 to indicate the degree of wetness. The probe is typically applied to floor locations or any selected location where the presence of conductive liquids will cause safety issues, damage, or some other form of hazard.

Software

Our open architecture allows our device to run on any operating system through a variety of vendor software programs making us adaptable to new or current customer environments. Visit our Web site (www.sensatronics.com/nms/listing.php) to review the latest list of compatible software applications.

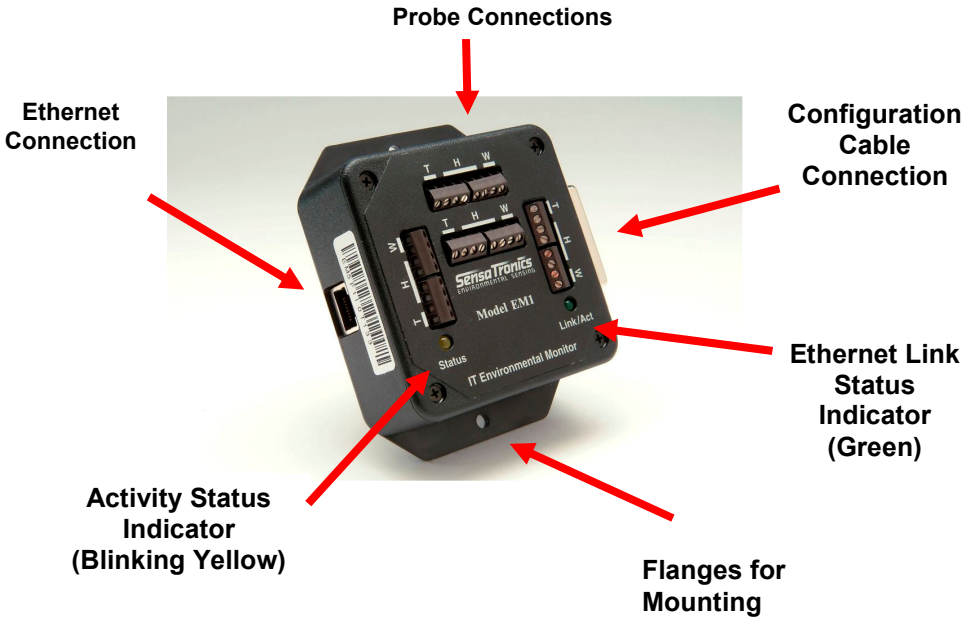
Technical Specifications

Standard Features

The Model EM1 Environmental Monitor is equipped with the following:

- Range from -40°F to 203°F (-40°C to +95°C)
- Network connection via Ethernet hub or switch
- Internal Web server
- Fahrenheit, Celsius, Kelvin or Rankine unit
- RS-232C (25-pin female D connector)
- Power supply of 9VDC@250mA
- Measures humidity with accuracy of 2.5%
- Measures wetness
- SNMP V1, partial MIB-II support
- Mounting flanges
- Light weight – about 0.35 lbs
- Compact size – 4 ¼" x 3 ¼" x 1 ¾"

Detail Diagram

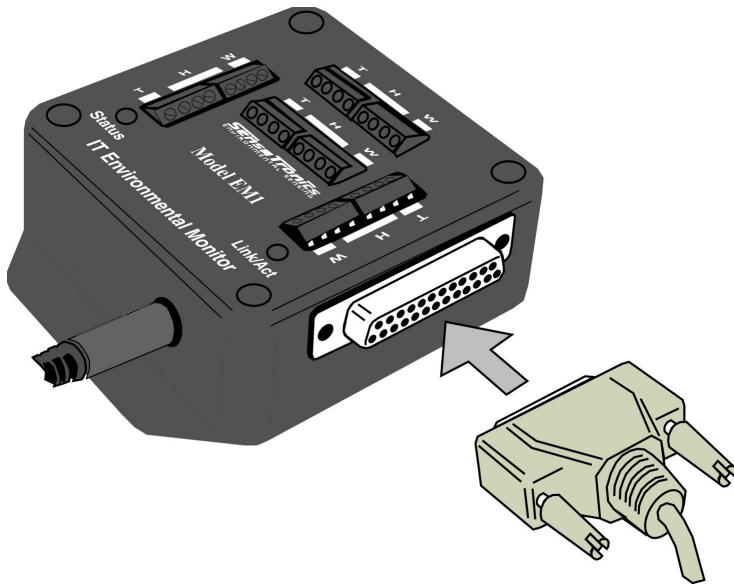


Connecting the Device

Step 1. Connect the Configuration Cable

A white configuration cable is supplied with the Model EM1 Environmental Monitor and plugs directly into the device. (This cable is only connected during the configuration process and does not need to remain connected during normal operation.)

- a. Connect the DB-25 male connector on the configuration cable to the RS-232 serial port on the right side of the temperature monitor.
- b. Connect the other end of the configuration cable (DB-9 female connector) to the serial port of your PC.

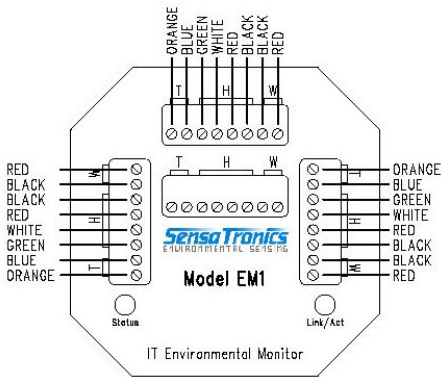


Step 2. Connect the Temperature Probes

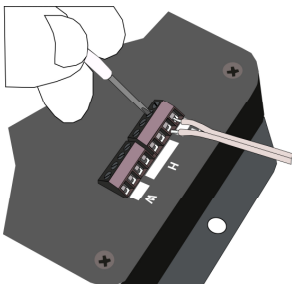
The EM1 Environmental Monitor can connect to up to twelve probes, four sets each of temperature, humidity, and wetness probes. A combination temperature/humidity probe counts as two probes, a wetness probe uses one wetness channel. Each temperature or wetness probe is comprised of a pair of wires – each wire must be connected to the device, polarity does not matter. For the humidity portion of the combination probe, four wires must be connected as described below.

- a. Using the screwdriver included with your device, connect the first pair of probe wires to the retainer labeled T.

Note: If attaching humidity/temperature probes then follow the color coded diagram below. (A brown wire may actually replace the orange wire in your particular unit.) If you are connecting a standard temperature probe, however, then you will need to attach the probe's Red/Black wires to the retainer labeled Blue/Orange, in the diagram below.



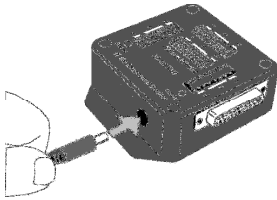
- b. Slip each wire into the appropriate slot and tighten the coordinating screw. (Continue for all probes using the next respective retainer.)



Step 3. Connect the Power Supply

A power cord is supplied with each Model EM1 Environmental Monitor.

- a. Plug the round end of the cord into the jack on the side of the temperature monitor.
- b. Plug the wall transformer into a powered outlet.
- c. Verify that the yellow activity status indicator (Status) is blinking. (As long as the module has power, the yellow activity status indicator will blink six times, pause briefly, and then repeat in a continuous cycle as it scans the probes for sensor readings.)



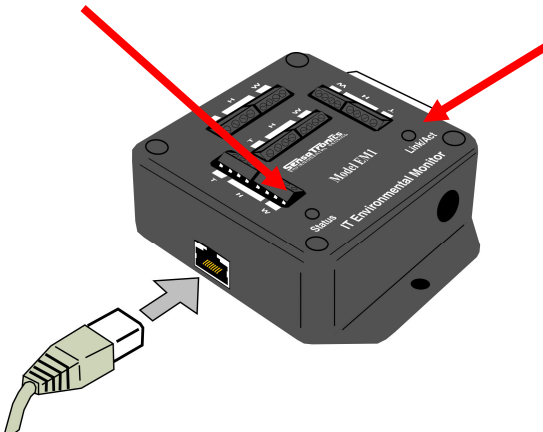
Step 4. Connect the Ethernet Cable

An Ethernet cable is supplied with the device.

- a. Connect one end of the Ethernet cable to the connector on the side of your temperature monitor and the other end to your network hub or switch.
- b. Verify that the green Ethernet link status indicator (Link/Act) is lit to indicate a good connection.

Activity Status Indicator

Ethernet Link Status Indicator



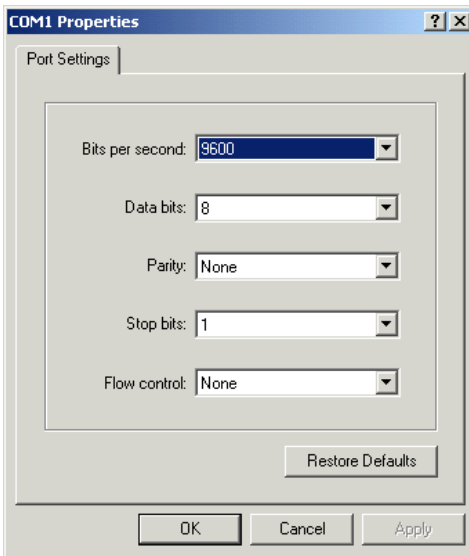
Configuring the Device

Before you can use the Model EM1 Environmental Monitor, you must either determine a static IP address, network mask and gateway that is available on your network, or set the unit to DHCP mode. The address received in DHCP mode can be determined by connecting to the RS232 serial port.

Step 1. Configure the RS-232 ports

Start a terminal emulator program (such as HyperTerminal included with MS Windows).

- a. Set the RS-232 port settings as shown:



Bits per second: **9600**

Data bits: **8**

Parity: **None**

Stop bits: **1**

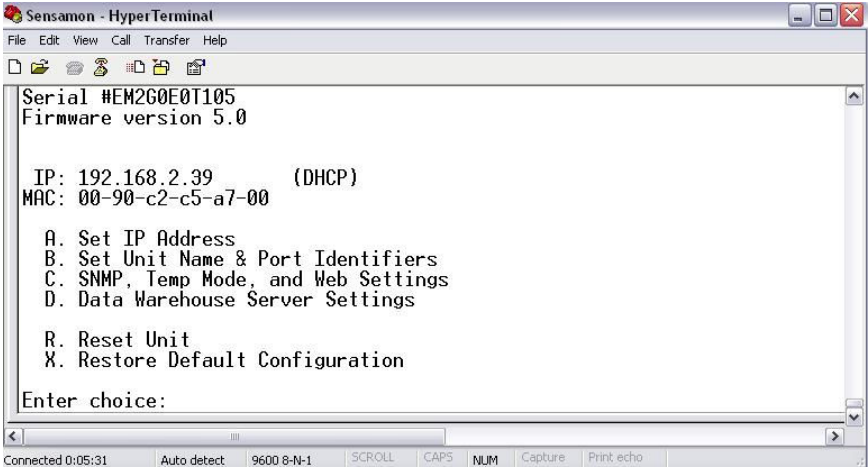
Flow control: **None**

Note: If the settings are incorrect, the device will not be able to communicate with your terminal emulator.

- b. Ensure that the power cord jack is connected to the Model EM1 Environmental Monitor and the wall transformer is plugged into a powered outlet.

Step 2. Configure the IP Address and Network Mask

Press **Enter** to display the Main Menu. Select the menu items for configuring the unit and for setting the IP address and net mask.



```
Sensamom - HyperTerminal
File Edit View Call Transfer Help
Serial #EM2G0E0T105
Firmware version 5.0

IP: 192.168.2.39      (DHCP)
MAC: 00-90-c2-c5-a7-00

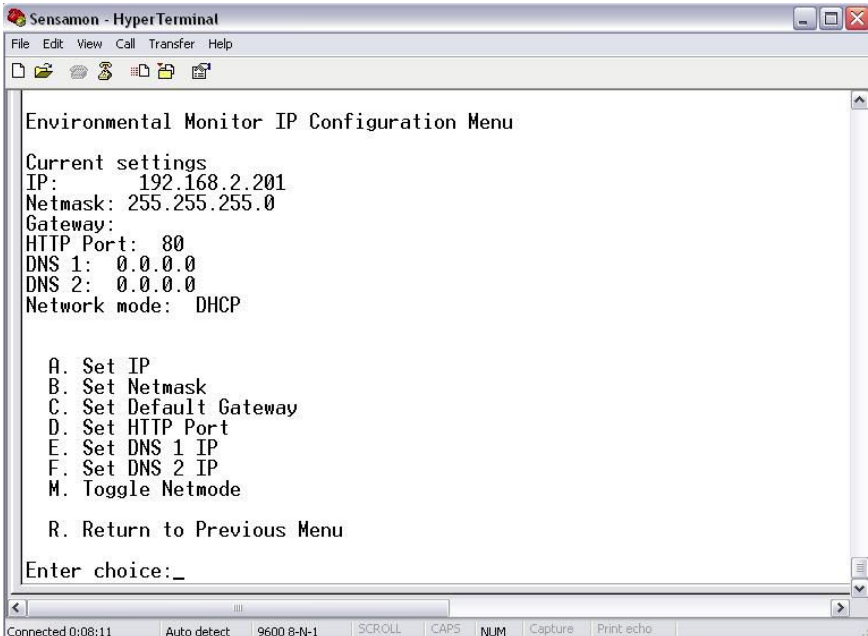
A. Set IP Address
B. Set Unit Name & Port Identifiers
C. SNMP, Temp Mode, and Web Settings
D. Data Warehouse Server Settings

R. Reset Unit
X. Restore Default Configuration

Enter choice:
```

Connected 0:05:31 | Auto detect | 9600 8-N-1 | SCROLL | CAPS | NUM | Capture | Print echo

The menu will display as shown:



```
Sensamom - HyperTerminal
File Edit View Call Transfer Help
Environmental Monitor IP Configuration Menu

Current settings
IP: 192.168.2.201
Netmask: 255.255.255.0
Gateway:
HTTP Port: 80
DNS 1: 0.0.0.0
DNS 2: 0.0.0.0
Network mode: DHCP

A. Set IP
B. Set Netmask
C. Set Default Gateway
D. Set HTTP Port
E. Set DNS 1 IP
F. Set DNS 2 IP
M. Toggle Netmode

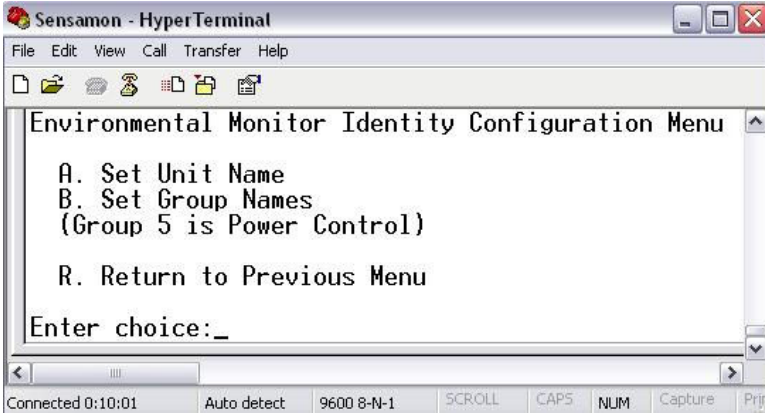
R. Return to Previous Menu

Enter choice:_
```

Connected 0:08:11 | Auto detect | 9600 8-N-1 | SCROLL | CAPS | NUM | Capture | Print echo

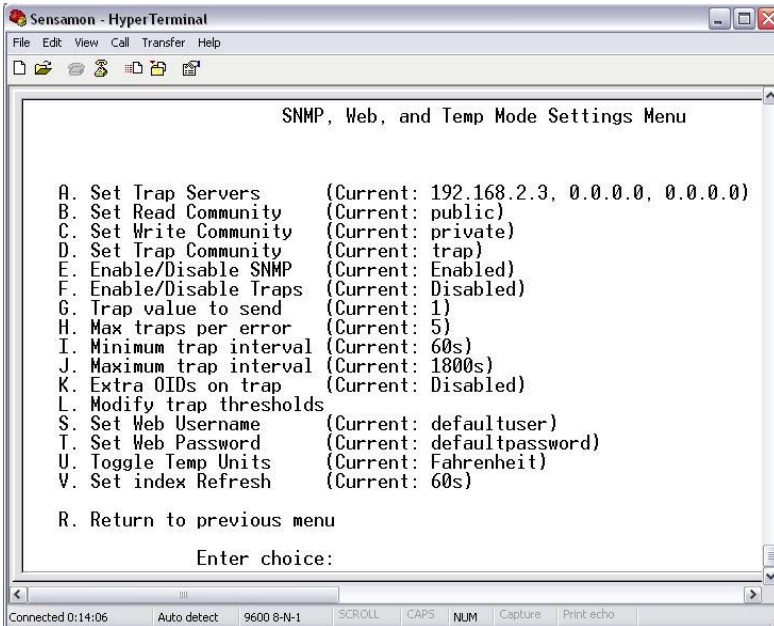
Step 3. Name the Device and the Probes

We suggest that you name the unit and its associated probes with logical names for convenience. (The default probe names are Probe1, Probe 2, etc.). From the Main Menu, press **B** to make those changes.



Step 4. Set SNMP Parameters

Return to the Main Menu and press **C** to set SNMP Parameters.



Step 5. Complete the Process

Return to the main menu to ensure that all settings take effect.

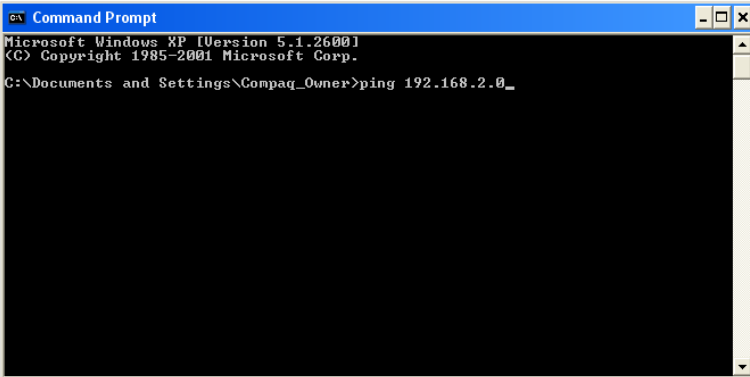
Note: There will be a short pause before the Main Menu displays.

- a. Disconnect the RS-232 cable from the device and from your PC.
- b. Connect one end of the Ethernet cable supplied with the Model E monitor to the device, and the other end of the cable to your network hub or switch.

Step 6. Verify Proper Working Order

Verify that the device is functioning as expected.

- a. At the Command Prompt, ping the device using the IP address that you assigned in Step 2.



```
Microsoft Windows XP [Version 5.1.2600]
(C) Copyright 1985-2001 Microsoft Corp.

C:\Documents and Settings\Compaq_Owner>ping 192.168.2.0_
```

- b. Launch a Web browser using the IP address that you assigned in Step 2. Temperature data should display. For example, if the unit IP is 192.168.2.201, enter `http://192.168.2.201` in your Web browser's address bar.

The screenshot shows a Mozilla Firefox browser window with the following content:

Model:	EM1	Firmware Version:	5.0
Manufacturer:	Sensatronics	Release Date:	April 22, 2005
Website:	http://www.sensatronics.com/	Serial Number:	EM2G0E0T105

Unit name: Test Monitor

CEO Environment		
CEO Temp	CEO RH	CEO Leakage
74.4 °F	-999.9 %	-999.9

Group 3	
Wetness	-999.9
Humidity	-999.9 %
Temperature	-999.9 °F

Group 2		
Temperature	Humidity	Wetness
-999.9 °F	-999.9 %	-999.9

Group 4	
Temperature	-999.9 °F
Humidity	-999.9 %
Wetness	-999.9

Sensatronics
Environmental Sensing

Model EM1

IT Environmental Monitor

Done

Software Options

SEMS Solution

Sensatronics Environmental Management Solution (SEMS) is a comprehensive real-time, cold-storage monitoring solution that allows you to view the overall stability and well-being of your temperature-controlled units from a single Web-based interface. Our subscription-based service, coupled with our high-quality monitoring devices provides you with a complete monitoring, notification and trending analysis solution without having to invest in a complex infrastructure.

SEMS is comprised of three basic components: the temperature monitoring devices and probes, which monitor activity from a particular unit and then send data to the SEMS server; the SEMS server tracks utilization and compares the reported data against thresholds that you define, then broadcasts the status, including alerts and alarms; and desktop and Web-based graphical user interfaces which display the results in an easy to read format that allows any (or all) of your staff to easily view the overall status of your environment – or even to receive immediate alerts to a pager, cell phone, or text messenger for catastrophic failures.

Contact us for a real-time, online demonstration. Call (800) 633-1033 to schedule an appointment with one of our SEMS Sales Managers.

SNMP

SNMP Version 1.0 is supported in the Model E series of temperature monitors. The latest MIB files are available via our website at:

<http://www.sensatronics.com/downloads/snmp/>

To set the SNMP community strings, use the serial port configuration menus from Step 2, and press **C**.

Note: When configuring the SNMP community strings (read, read/write, and trap), be sure you don't leave any of them blank, or the SNMP module will not start. They default to public, private and trap.

A graphical representation of the latest MIB format can be found at our Web site

<http://www.sensatronics.com/downloads/snmp/em1-mibmap.png>

CRON Log File Tool

Perl scripts are available for simple logging of unit data by Unix/Linux/Solaris/ and other similar systems.

Download the scripts from our website at:

<http://sensatronics.com/downloads/plugins/cron/>

This CRON script produces a CSV Log File with date and temperatures suitable for importing into most common spreadsheets. The script requires netcat which can be found at the following URL.

Note: This script is NOT supported by Sensatronics.

<http://netcat.sourceforge.net/download.php>

Note: The script is designed to be executed no more than once per minute. We do not recommend polling at more frequent intervals.

Write Your Own

The Model EM1 Environmental Monitor runs an internal Web server that listens for TCP/IP HTTP /GET requests on Port 80, and responds to five different URL requests – /index.html, /xmldata, /xmlconfig, /data and /config.

/index.html: This is the main index page that returns an HTML-formatted Web containing the temperatures of all connected probes. This index page also provides details about the Temperature Monitor such as manufacturer, serial number, unit, and probe names.

/data: This request will return an HTML-free Web page, consisting of a simple ASCII string of pipe-delimited data.

The data will be in the format of

“Temp mode|Group 1 temp|Group 1 Humidity|Group 1 Wetness|Group 2 Temp...”

This URL is typically used by OEMs who are packaging the Temperature Monitor for use with their own software and need an easy and efficient way to get at the probe temperature data. This URL is also handy for those wishing to write their own software interface to simply and quickly obtain the temperatures and incorporate them into their existing Network Management Software.

Here’s an example:

```
F|70.9|46.0|67.8|-999.9|-999.9|75.7|69.9|-999.9|-999.9|222.6|-999.9|-999.9
```

/config: This request will return an HTML-free Web page, consisting of a simple ASCII string of pipe-delimited data. The information contained in this string of data will include configuration information about the Temperature Monitor such as serial number, unit and probe names, and model number.

Here’s an example:

```
EM00000000|EM1|Model EM1|12|4.1|1|Server  
Room|T|Temperature|H|Humidity|W|Wetness|2|Group  
2|T|Temperature|H|Humidity|W|Wetness|3|Group  
3|T|Temperature|H|Humidity|W|Wetness|4|Group  
4|T|Temperature|H|Humidity|W|Wetness
```

To query the Temperature Monitor from within your own software, you will need an understanding of TCP/IP Sockets and the HTTP protocol. Consult the documentation of the specific programming language for details. After successfully initializing and opening up a TCP/IP socket to the Temperature Monitor, you will be able to communicate with it using the HTTP Protocol.

To request the /data URL simply send the following string

```
"GET /data HTTP/1.0 <CR><LF><CR><LF>"
```

Using the **Telnet** command is a convenient way of retrieving data from the Temperature Monitor. Open a telnet session to the Temperature Monitor unit's IP Address on Port 80.

For example, if the Temperature Monitor was configured on IP 192.168.2.101, you would send the following command:

```
telnet 192.168.2.101 80
```

If successful, you will be able to send command directly to the Temperature Monitor. Recall that one such command is **/temp:**

```
GET /data HTTP/1.0
```

Followed by pressing **Enter** twice.

This will return a non-HTML ASCII, pipe-delimited string...just as it would if you were to open your Web browser and type the following in the URL box:

```
http://192.168.2.101/data
```

Here's an example of a return string:

```
F|70.9|46.0|67.8|-999.9|-999.9|75.7|69.9|-999.9|-999.9|222.6|-  
999.9|-999.9
```

Software Plug-ins

A plug-in is a module that extends the capabilities of the network management software. Following are some of the available applications that are compatible with our devices. Refer to the vendors' specific sites for further information.

Product	URL
ActiveXperts	www.activexperts.com
Advanced Host Monitor	www.ks-soft.com
Big Brother	www.bb4.com
Bizwatch	www.bizwatch.com
DotCom-Monitor	www.dotcom-monitor.com
HP Openview	www.hp.com
Intellipool Network Monitor	www.intellipool.com
IPSentry	www.ipsentry.com
MRTG	www.mrtg.org
N-Able	www.n-able.com
Nagios	www.nagios.org
Overseer Network Monitor	www.sensiblesoftware.com
Server Nanny	www.servernanny.com
Servers Alive	www.woodstone.nu
SNMPc	www.castlerock.com
Tembria Network Monitor	www.tembria.com
TempElert	www.tempelert.com
Visualware	www.visualware.com
WhatsUp	www.ipswitch.com

Trouble Shooting

Problem	Solution
<p>The unit does not work – what is wrong?</p>	<p>Several problems could be responsible for the unit not working properly. Try the following:</p> <ul style="list-style-type: none"> - Verify that the wall transformer is securely plugged into the outlet and that the power cord jack is securely connected to the device. - Verify that the outlet into which the transformer is plugged has power. - Check probe line connections. - If the unit was recently installed, verify that it was properly configured. Note: The Flow Control Setting must be set to None. Try reconfiguring the device.
<p>I can neither ping the unit nor display its internal Web page.</p>	<ul style="list-style-type: none"> - Verify the unit's IP address and network mask to ensure that they are valid for your LAN/WAN. - Ensure that once you have entered your IP address and network mask settings that you return to the main menu before powering down the device. - Verify that your switch or hub is properly configured to work with the 10Mbps data rate at which the Ethernet interface is running.
<p>I can display the Environmental Monitor's main/index page, but I cannot get to its other URLs (i.e., /config, /data).</p>	<p>This may be due to a proxy server.</p> <ul style="list-style-type: none"> - Try bypassing the proxy or - Configure the proxy to allow this traffic.

Problem	Solution
<p>I get a temperature reading of -999.9°.</p>	<p>This temperature reading indicates that the probe for that position is not connected.</p> <ul style="list-style-type: none"> - Check the line to ensure you have a solid connection to the device. - Verify that the line between the probe and the device has not been cut.
<p>I get a temperature reading of 9999.9°.</p>	<p>This temperature reading indicates that there is a short in the line, typically caused by the two probe leads touching each other.</p> <ul style="list-style-type: none"> - Check the line for damage.
<p>Where can I find the latest software plug-ins?</p>	<p>If you cannot find the latest plug-ins at the software publisher's Web site, check our plug-in listing at</p> <p>http://sensatronics.com/downloads/plugins</p>
<p>The wetness probe reads greater than 0 and less than 10. Is something wrong?</p>	<p>The probe is sensitive to humidity and may read values less than 10 when no liquids are present. In the presence of liquid, the probe will read greater than 50. If the probe has previously been wet and then dried, it may need to be cleaned to avoid a false wetness reading. (See below.)</p>

Problem	Solution
<p>The wetness probe has gotten wet. Do I need to replace it?</p>	<p>No. However, it is probably necessary to clean the probe. To clean it, thoroughly rinse it in distilled water. An improperly cleaned probe may give false wetness readings. A wet probe may take 48 hours or more to dry, depending upon the humidity.</p>

Warranty

GENERAL WARRANTY POLICY

Sensatronics, LLC (hereinafter referred to as SENSATRONICS) warrants that the Product shall conform to and perform in accordance with published technical specifications and the accompanying written materials, and shall be free of defects in materials and workmanship, for the period of time herein indicated, such warranty period commencing upon receipt of the Product. This Limited Warranty applies only to hardware products manufactured by or for SENSATRONICS that can be identified by the Sensatronics trademark, trade name, or logo affixed to them. The Limited Warranty does not apply to any non-Sensatronics hardware products or any software, even if packaged or sold with Sensatronics hardware.

This warranty is limited to the repair and/or replacement, at SENSATRONICS discretion, of defective or non-conforming Product, and SENSATRONICS shall not be responsible for the failure of the Product to perform specified functions, or any other non-conformance caused by or attributable to: (a) any misapplication or misuse of the Product; (b) failure of Customer to adhere to any of SENSATRONICS specifications or instructions; (c) neglect of, abuse of, or accident to, the Product; or (d) any associated or complementary equipment or software not furnished by SENSATRONICS.

Limited warranty service may be obtained by delivering the Product to SENSATRONICS in the US or to the international distributor it was purchased through and providing proof of purchase or receipt date. Customer agrees to insure the Product or assume the risk of loss or damage in transit, to prepay shipping charges to SENSATRONICS, and to use the original shipping container or equivalent.

LIMITATION OF LIABILITY

EXCEPT AS EXPRESSLY PROVIDED HEREIN, SENSATRONICS MAKES NO WARRANTY OF ANY KIND, EXPRESSED OR IMPLIED, WITH RESPECT TO ANY EQUIPMENT, PARTS OR SERVICES PROVIDED PURSUANT TO THIS AGREEMENT, INCLUDING BUT NOT LIMITED TO THE IMPLIED WARRANTIES OF MERCHANTABILITY AND FITNESS FOR A PARTICULAR PURPOSE NEITHER SENSATRONICS NOR ITS DEALER SHALL BE LIABLE FOR ANY OTHER DAMAGES, INCLUDING BUT NOT LIMITED TO DIRECT, INDIRECT, INCIDENTAL, SPECIAL OR CONSEQUENTIAL DAMAGES, WHETHER IN AN ACTION IN CONTRACT OR TORT (INCLUDING NEGLIGENCE AND STRICT LIABILITY), SUCH AS, BUT NOT LIMITED TO, LOSS OF ANTICIPATED PROFITS OR BENEFITS RESULTING FROM, OR ARISING OUT OF, OR IN CONNECTION WITH THE USE OF FURNISHING OF EQUIPMENT, PARTS OR SERVICES HEREUNDER OR THE PERFORMANCE, USE OR INABILITY TO USE THE SAME, EVEN IF SENSATRONICS OR ITS DEALER HAS BEEN ADVISED OF THE POSSIBILITY OF SUCH DAMAGES. IN NO EVENT WILL SENSATRONICS OR ITS DEALERS TOTAL LIABILITY EXCEED THE PRICE PAID FOR THE PRODUCT.

The limited warranty does not apply to any software, even if packaged or sold with Sensatronics hardware. Non-Sensatronics manufacturers, suppliers, or publishers may provide their own warranties. Software distributed by Sensatronics under the Sensatronics brand name (including, but not limited to monitoring software) is not covered under this Limited Warranty. Refer to the individual Software License Agreements for more information.

Where dictated by Country or State Law, some of the above exclusions or limitations may not be applicable in some countries or states. This warranty provides specific legal rights; other rights that vary from country to country or state to state may also exist. This warranty shall not be applicable to the extent that any Federal,

State or Municipal Law that cannot be preempted prohibits any provision of this warranty.

HARDWARE PRODUCT WARRANTY DETAILS

WARRANTY PERIOD: SENSATRONICS warranties hardware Product for a period of Two (2) Years.

WARRANTY PROCEDURE: Upon return of the hardware Product SENSATRONICS will, at its option, repair or replace Product at no additional charge, freight prepaid, except as set forth below. Repair parts and replacement Product will be furnished on an exchange basis and will be either reconditioned or new. All replaced Product and parts become the property of SENSATRONICS. If SENSATRONICS determines that the Product is not under warranty, it will, at the Customer's option, repair the Product using current SENSATRONICS standard rates for parts and labor.

Index

C

Configuration _____	8
IP Address _____	9
Logical Names _____	10
Network Mask _____	9
Ping _____	11
RS-232 Ports _____	8
SNMP Parameters _____	10
Configuration Cable _____	5
Connection _____	5
Ethernet Cable _____	7
Power Supply _____	7
Temperature Probes _____	6

D

Description _____	3
--------------------------	----------

E

Ethernet Cable _____	7
-----------------------------	----------

P

Power _____	7
Power Cord _____	7
Product Overview	
Monitor _____	2
Product Overview _____	2
Probes _____	2
Software _____	3

S

Software _____	13
CRON Log File Tool _____	14
SEMS _____	13
SNMP _____	13
Write Your Own _____	15
Status Indicator _____	7
Activity Status (Yellow) _____	7
Ethernet Link Status (Green) _____	7

T

Technical Specifications _____	3
Detail Diagram _____	4
Standard Features _____	3
Technical Support _____	1
Email _____	1
Instant Message _____	1
Support Forum _____	1
Telephone _____	1
Troubleshooting _____	18
Bad readings _____	19
Cannot access URLs _____	18
Cannot ping the unit _____	18
Cleaning probes _____	20
Unit does not work _____	18

W

Warranty _____	21
-----------------------	-----------